

Airsafe

■ EUL-RG

■ Elevated Runway Guard Light

Compliance with Standards

CAAC: AC-137-CA-2015-03
 SAC: GB/T 7256
 ICAO: Annex 14, Volume I
 IEC: TS 61827
 FAA: AC 150/5345-46
 NATO: STANAG 3316

Application/Use

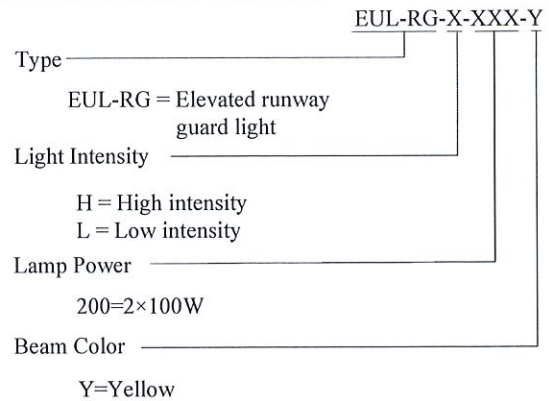
Runway guard light

Features

- Comply with ICAO chromaticity and photometric requirements, alternately illuminated at the rate of 45-50 flashes per minute
- Filter with improved coating process, featuring good transmittance, high bonding and excellent thermo stability
- International standard PK30D preset focus bulb with accurate positioning and premium light distribution precision
- Self-alignment optical component without need of recalibration when replacing bulb as well as optical components
- Glass equipped with a visor provides anti-dazzle prevention for pilots at a close range
- Proprietary reflector design, cold light cup processing, temperature variations will not cause any cracks in the glass and filter
- The control circuit design with multiple protection functions to ensure reliability service
- Compact structure and attractive appearance, with small windward area and strong ability against the gales
- Split-type lighting fixture with lamp holder of fully enclosed structure
- The main body is made of aluminum alloy with anti-corrosion surface, all fasteners are made of stainless steel, suitable for harsh environment application
- High-precision parts and components machining to ensure all dimensional quality and precision
- Forged frangible device with precise machining, complying with FAA standards, ensuring good stability and reliability
- IP65-grade protected from total dust ingress
- The fixture can be connected to both one or two-inch frangible tube, which ensures convenient and secure installation.
- The calibrator can be installed directly on the body with high precision
- Equipped with chains to prevent lights which have broken from their mounting from blowing away
- Tool free maintenance, easier to disassemble, and to replace the bulb
- Interchangeable, modular-designed components, easy to replace

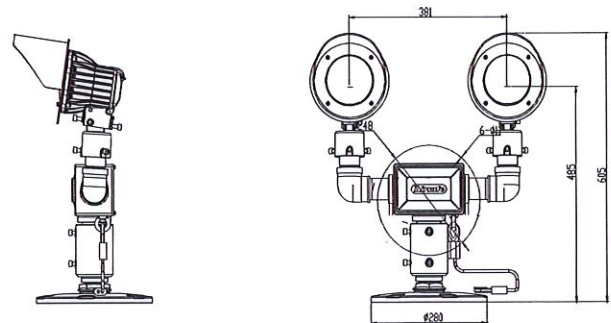


Ordering Information



* Please provide detailed installation info while ordering, parts and accessories should be ordered separately specific with order no.

Dimensions



Installation

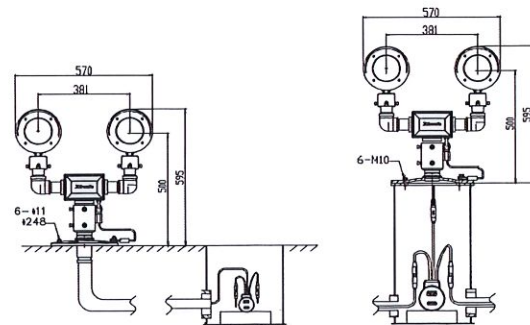


Fig 1. On 12" deep base

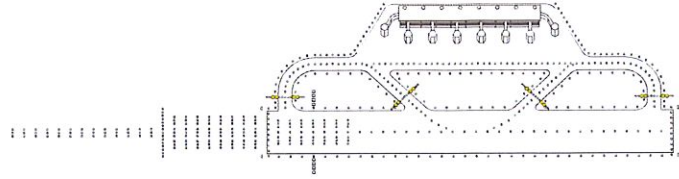
Fig 2. On ground with base plate

* Please find detailed information in installation manual

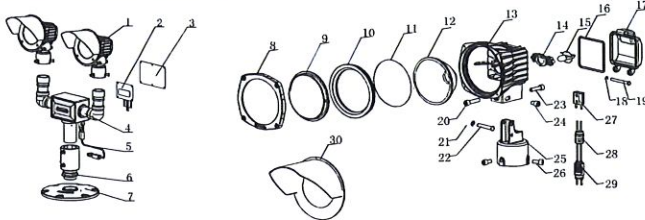
Airsafe

■ EUL-RG

■ Elevated Runway Guard Light



Construction

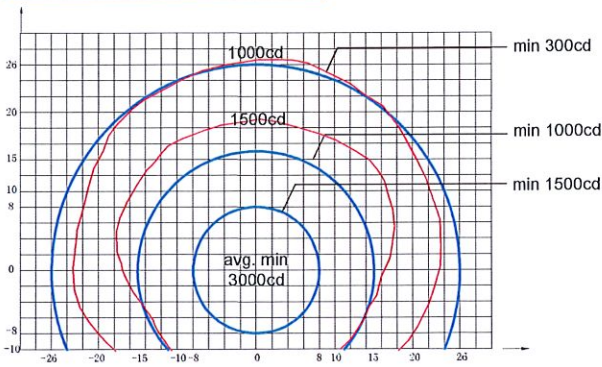


- | | | |
|------------------|--------------------|---------------------|
| 1.head assy | 11.optical filter | 21.washer |
| 2.control panel | 12.reflector | 22.hinge pin |
| 3.cover plate | 13.head assy | 23.adjusting screw |
| 4.holder | 14.lamp holder | 24.lock screw |
| 5.chain | 15.lamp | 25.lamp body pallet |
| 6.frangible stem | 16.seal gasket | 26.set screw |
| 7.flange | 17.rear cover | 27.lamp socket |
| 8.front cover | 18.washer | 28.water joint |
| 9.front glass | 19.hinge pin | 29.plug |
| 10.seal gasket | 20.adjusting screw | 30.visor |

Light Source

Illuminant: Two 100W/6.6A Pk30d prefocus halogen lamps.

Photometric Data



EUL-RG (Yellow), ICAO Figure A2-25, FAA L-804

Application		Main Beam		Color	Required min avg. cd	Actual avg. cd
		H	V			
EUL-RG	ICAO Figure A2-25/ FAA L-804	±8°	±8°	Yellow	3000	4871

Packing Data

1 elevated light Size: 220×220×265 mm³
 Unit net weight: 1.91 kg Gross weight: 2.33 kg

Parts

Struc No.	Part Name	Part No.	Description
1	head assy	EUL-RG-Y-01	EUL-RG-Y-01
2	control panel	45544	for elevated runway guard lights
3	electricity box cover plate	45538	electricity box cover plate
4	holder	945537	945537
5	chain	61114	PAPI0-chain
6	frangible stem	924251	2" sleeve frangible stem (heavy type)
7	flange	27611	flange 280
8	front cover	45515	front cover
9	front glass	31108	front glass JJD
10	seal gasket	41110	front cover strip seal (silicone)
11	optical filter	31317-Y	optical filter (coated) 115-yellow
12	reflector	31109	reflective glass
13	head assembly	24151	unidirectional light
14	lamp holder	945518	for elevated lights-lamp holder PK30D
15	lamp	L64341	halogen lamp, 100 W/6.6 A
16	seal gasket	41111	for rear cover-seal
17	rear cover	45516	rear cover JJD
18	washer	GB/T896-1986	split washer 4-flat washer
19	hinge pin	45522	pin - rear cover hinge pin III
20	adjusting screw	GB/T70.1-2000	hex. socket head screws M8×35
21	washer	GB/T896-1986	split washer 4-flat washer
22	hinge pin	45523	pin - head assembly hinge pin
23	adjusting screw	GB/T70.1-2000	hex. socket head screws M8×30
24	lock screw	GB/T70.1-2000	hex. socket head screws M8×16
25	lamp body pallet	45517	pedestal JJD
26	set screw	GB/T70.1-2000	hex. socket head screws M8×16
27	lamp socket	41221	lamp socket
28	water joint	48404	metal water joint MG18×1.5
29	plug	HT 70603	secondary cable connector - Style 6 plug
30	visor	945531	visor (assy)

EUL-RG

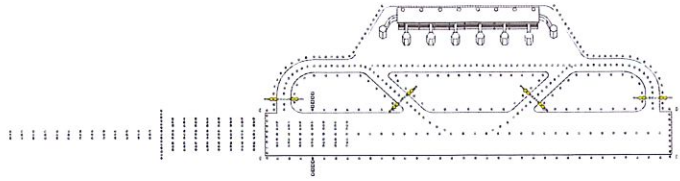
2

3

Airsafe

■ EUL-RG

■ Elevated Runway Guard Light



Accessories

Description	Order No.
flange 240mm	276A1
flange 304mm (FAA standard)	27683
2" sleeve frangible stem assy	924252
2" frangible stem	24261
100-watt isolation transformer	ITF-100-066
secondary cable connector - style 7 socket	70703
calibrator assy	954211

EUL-RG

3

3

* All rights reserved, subject to modifications

Letter of Attestation

On the basis of the tests undertaken, the sample(s) of the below product have been found to comply with the essential requirements of the referenced portions of the specifications at the time the tests were carried out.

Manufacturer Name & Address : Airsafe Airport Equipment Co. Ltd
Room 27AB DongTai Bldg.
No. 309 Tang Gu Road
Shanghai, 200080
China

Product(s) Tested : ELEVATED RUNWAY GUARD LIGHT

Ratings and principal characteristics : Halogen lamp 2x100W 6.6A Yellow

Model(s) : EUL-RG

Description : Elevated Runway Guard Light

Relevant Standard(s) / Specification(s) / Directive(s) : ICAO Annex 14, Volume I, Fifth Edition dated July 2009 (photometry) Appendix 2 Figures A2-25 (chromaticity)-Appendix 1, Figure A1-1


Verification Issuing Office Name & Address : Intertek Testing Services Shanghai
Building No.86, 1198 Qinzhou Road (North), Shanghai 200233, China

Verification Number : 140501506SHA-V3

Report Number(s) : 140501506SHA-003

NOTE 1: This verification is part of the full test report(s) and should be read in conjunction with it.

This Verification is for the exclusive use of Intertek's Client and is provided pursuant to the agreement between Intertek and its Client. Intertek's responsibility and liability are limited to the terms and conditions of the agreement. Intertek assumes no liability to any party, other than to the Client in accordance with the agreement, for any loss, expense or damage occasioned by the use of this Verification. Only the Client is authorized to copy or distribute this Verification. Any use of the Intertek name or one of its marks for the sale or advertisement of the tested material, product or service must first be approved in writing by Intertek. The observations and test results referenced from this Verification are relevant only to the sample tested. This Verification by itself does not imply that the material, product, or service is or has ever been under an Intertek certification program.



Signature
Name: Berlin Duan
Position: Manager
Original Issue Date: January 2014
Re-evaluation Due Date: January 2017