

Airsafe

■ EUL-ED

■ Elevated Runway End Light



Compliance with Standards

CAAC: AC-137-CA-2015-03
 SAC: GB/T 7256
 ICAO: Annex 14, Volume 1
 IEC: TS 61827
 FAA: AC 150/5345-46
 NATO: STANAG 3316

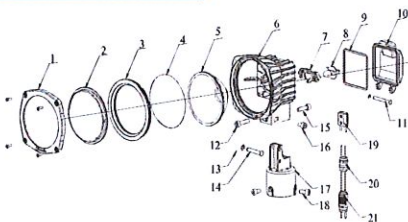
Application/Use

Runway End light

Features

- Proprietary optical design to ensure full lighting spot when the glass is partially obscured
- Filter with improved coating process, featuring good transmittance, high bonding and excellent thermo stability
- International standard PK30D prefocus bulb with accurate positioning and premium light distribution precision
- Self-alignment optical component without need of recalibration when replacing bulb as well as optical components
- Proprietary reflector design, cold light cup processing, temperature variations will not cause any cracks in the glass and filter
- Compact structure and attractive appearance, with small windward area and strong ability against the gales
- The main body is made of aluminum alloy with anti-corrosion surface, all fasteners are made of stainless steel, suitable for harsh environment application
- High-precision parts machining to ensure all dimensional quality and precision
- Forged frangible device with precise machining, complying with FAA standards, ensuring good stability and reliability
- IP65-grade ingress protection of the fixture, keep interior from dust
- The fixture can be connected to both one or two-inch extension pole, which ensures convenient and secure installation
- The calibrator can be installed directly on the body with high precision
- Tool free maintenance, easier to disassemble, and to replace the bulb
- Interchangeable, modular-designed components, applicable for all kinds of elevated unidirectional lights(halogen type), which effectively cuts down the inventories.

Structure



- | | | |
|-------------------------|---------------------------|--------------------------|
| 1. front cover | 8. lamp | 15. rear adjusting screw |
| 2. optical cover | 9. light body gasket | 16. side locking screw |
| 3. optical cover gasket | 10. rear cover | 17. body base |
| 4. filter | 11. hinge pin | 18. set screw |
| 5. reflector | 12. front adjusting screw | 19. lamp socket |
| 6. light body | 13. washer | 20. waterproof gland |
| 7. lamp holder | 14. hinge pin | 21. plug |

Ordering Information

Type EUL-ED-100-R
 EUL-ED=Elevated Runway End Light
 Power _____
 100 = 1×100W
 Beam Color _____

R=Red

* Please provide detailed installation info while ordering, spare parts and accessories should be separately ordered with specific order no.

Installation

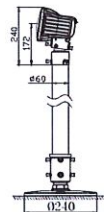


Fig 1. On extension pole.

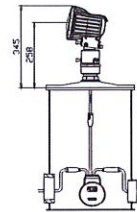


Fig 2. On 12" deep base.

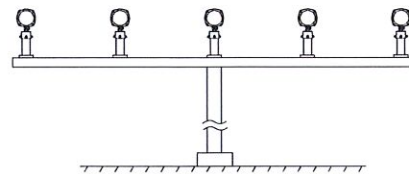


Fig 3. On approach mast.

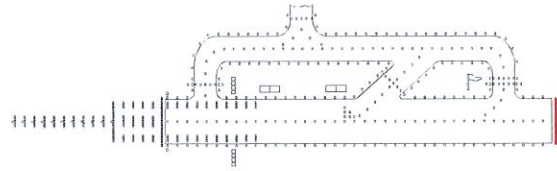
* Please find detailed information in installation manual.

EUL-ED

1
2

■ EUL-ED

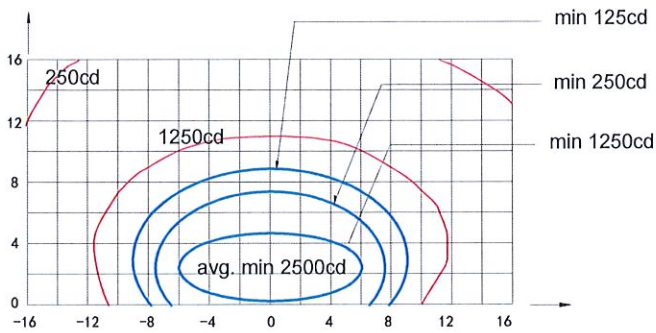
■ Elevated Runway End Light



Light source

Lamp: One 100W /6.6A Pk30d Prefocus halogen lamp.

Photometric Data



EUL-ED (Red), ICAO Figure A2-8, FAA L-862E

Application		Main Beam		Color	Required min avg. cd	Actual avg. cd
		H	V			
EUL-ED	ICAO Figure A2-8/ FAA L-862E	±6°	0.25°—4.75°/ 0.2°—4.7°	Red	2500	4012

Packing Data

1 elevated light Size: 220×220×265 mm³
 Unit net weight: 1.91 kg Gross weight: 2.33 kg

Accessories

Description	Order No.
flange 240mm	276A1
flange 304mm (FAA standard)	27683
2" socket frangible coupling assy	924252
2" frangible coupling	924241
150-watt isolation transformer	ITF-150-066
secondary cable receptacle - style 7	70703
calibrator assy	954211
isolation transformer housing	TJB-12

Spare Parts

Struc No.	Part Name	Order No.	Description
1	front cover	45515	front cover
2	optical cover	31108	front glass JJD
3	optical cover gasket	41110	front cover strip JJD seal
4	filter	31317-R	filter (coated) 115 -red
5	reflector	31109	reflective glass
6	light body	24151	unidirectional light
7	lamp holder	945518	for elevated lights-lamp holder PK30D
8	lamp	L64341	halogen lamp, prefocus, 100 W
9	light body gasket	41111	for rear cover-seal
10	rear cover	45516	rear cover JJD
11	hinge pin	45522	pin - rear cover hinge pin III
12	front adjusting screw	GB/T70.1-2000	hex. socket head screws M8×35
13	washer	GB/T896-1986	split washer 4-flat washer
14	hinge pin	45523	pin - head assembly hinge pin
15	rear adjusting screw	GB/T70.1-2000	hex. socket head screws M8×30
16	side locking screw	GB/T70.1-2000	hex. socket head screws M8×16
17	body base	45517	pedestal JJD
19	set screw	GB/T70.1-2000	hex. socket head screws M8×16
19	lamp socket	41221	lamp socket
20	waterproof gland	48404	metal water joint MG18×1.5
21	plug	HT 70603	secondary cable connector - Style 6 plug



E C A

CERTIFICATE OF CONFORMITY

08/X29/1/6346743-1001-7, rev.1

TO:
ICAO, Annex 14, Volume I, 7th Edition
UNE-IEC/TS 61827, 1th Edition
FAA AC 150/5345-46E
AENA PPT 015 -06/12

Products: Airfield Lighting Lights EUL-XX
Manufactured by: Airsafe Airport Equipment Co., Ltd
Applications:
Elevated approach centerline light
Elevated approach cross-bar light
Elevated approach side-row light
Elevated runway threshold light
Elevated runway threshold wing-bar light
Elevated runway end light
Elevated stop-bar light

We hereby certify:

That we conducted an inspection, review and documental study of the characteristics of the above mentioned equipment based on the reports of tests carried by the laboratories:

Intertek and SQI - Shanghai Institute of Quality Inspection and Technical Research,

as Certified National Certification Body who carried out testing according to the IECEE CB Scheme for the Scope as listed in the relevant part of the IECEE Web Site at www.iecee.org.

On the base of all the foregoing, and in view of the results obtained; we confirm that: the elevated lights model **EUL-AP, EUL-CB, EUL-SR, EUL-TH, EUL-THW, EUL-ED and EUL-SB** above referenced, manufactured by Airsafe Airport Equipment Co.Ltd., designed for airfield ground lighting applications,

FULFIL SATISFACTORILY

the demands and requirements of the above mentioned standards and of technical provisions of AENA referred in the present document, and specifically the specifications of the UNE-IEC/TS 61827.

Test	Elevated lights	Result
	Type	It fulfils
<u>a. Dimensional test</u>	6.2	Satisfactory
<u>b. Test Environmental</u>		
High temperature	6.3.1.1	Satisfactory
Low temperature	6.3.1.2.2	Satisfactory
Thermal shock	6.3.2.2	Satisfactory
Corrosion (saline sprayed)	6.3.3.2	Satisfactory
Electromagnetic compatibility	6.3.6.	Satisfactory
Moisture	6.3.4.	Satisfactory

Certificate nº08/X29/1/6346743-1001-7, rev.1

Page 1/2

This certificate cancels and replaces the certificate with number 08/X29/1/6346743-1001-7

ECA, Entidad Colaboradora de la Administración, S.L. Unipersonal - Edificio Bureau Veritas, Camí Can Ameller, n.º 34, 08195 Sant Cugat del Vallès (Barcelona) Reg. Merc. Barcelona, Tomo 37258, Folio 95, Hoja B-43360, Inscripción 399 - C.I.F. B08659601



E C A

FCA, Entidad Colaboradora de la Administración. S.L. Unipersonal Edificio Bureau Veritas, Camí Can Ametller, n.º 34, 08195 Sant Cugat del Vallès (Barcelona) Reg. Merc. Barcelona, Tomo 07256, Folio 95, Hoja B-44360. Inscripción 399 - C.I.F. B08056601

c. Test Structural Jet blast Frangibility	6.4.2.1 6.4.2.2	Satisfactory Satisfactory
d. Test Electrical Dielectric rigidity Creepage and clearance Resistance of isolation Electrical shock	6.5.1 6.5.2 6.5.3 6.5.4	Satisfactory Satisfactory Satisfactory Satisfactory
e. Functional test Photometry Chromaticity	6.6.1.1 6.6.2	Satisfactory Satisfactory
f. Endurance Test Accelerated life Test of useful lamp life (10 luminaires)	6.7.1.2 6.7.2.	Satisfactory Satisfactory

As well as the requirements listed to in ICAO Annex 14, Volume I, detailed below:

Elevated lights	Test	Test	Result
	Photometry	Chromaticity	It fulfils
EUL-AP	Figure A2-1 -Appendix 2-	Figure A1-1a -Appendix 1-	Satisfactory
EUL-CB	Figure A2-1 -Appendix 2-	Figure A1-1a -Appendix 1-	Satisfactory
EUL-SR	Figure A2-2 -Appendix 2-	Figure A1-1a -Appendix 1-	Satisfactory
EUL-TH	Figure A2-3 -Appendix 2-	Figure A1-1a -Appendix 1-	Satisfactory
EUL-THW	Figure A2-4 -Appendix 2-	Figure A1-1a -Appendix 1-	Satisfactory
EUL-ED	Figure A2-8 -Appendix 2-	Figure A1-1a -Appendix 1-	Satisfactory
EUL-SB	Figure A2-12 -Appendix 2-	Figure A1-1a -Appendix 1-	Satisfactory

And for the record for the appropriate purposes we issue and sign this Certification in Barcelona, on December 11 of 2017.

Inspector Bureau Veritas
Laura Arcas

