



- RAP-08
- Rapid Exit Taxiway Indicator (8-inch)

Compliance with Standards

CAAC: AC-137-CA-2015-03
 SAC: GB/T 7256
 ICAO: Annex 14, Volume 1
 IEC: TS 61827
 FAA: AC 150/5345-46
 NATO: STANAG 3316

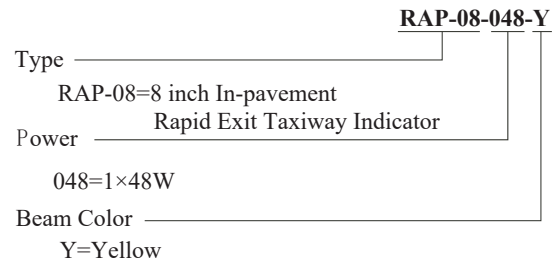
Application/Use

Runway end light

Features

- Proprietary prism structural design and manufacturing process to ensure excellent optical performance
- Self-alignment optical component without need of recalibration when replacing bulb as well as optical components
- Upper cover with flat out-light surface to prevent from water buildup and ensure high luminous efficiency
- Upper cover with equal-strength design and forging craft, which has premium mechanical and barrier capacity, and shock resistance ability
- Smooth and sleek upper cover to prevent from damaging aircraft tires
Lighting fixture made of highly conductive aluminum alloy, which ensures good heat dispersion
- Bulb Fixed mount suspension design to effectively prolong bulb's lifetime
- Main structure made of corrosion-resistant aluminum alloy with special special anodic oxidation treatment, all fasteners are made of stainless steel, suitable for harsh environment application
- High-precision parts and components machining to ensure all dimensional quality and precision
- IP68-grade, that can withstand inner pressure of up to 138kpa or water pressure generated from aircrafts' impact on the optical window
- Optional dual plug that permits bilateral control of the two-way light and intelligent loop control

Ordering Information



* Please provide detailed installation info while ordering, spare parts and accessories should be separately ordered with specific order no.

Installation

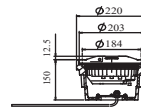


Fig 1. On 8" shallow base

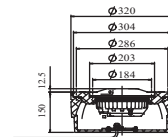


Fig 2. On 12" shallow base w/ 12 7/8" adapter ring

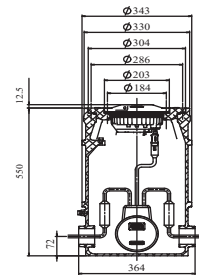
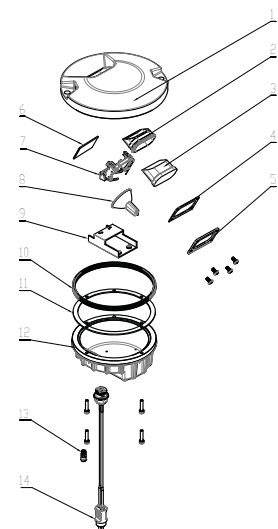


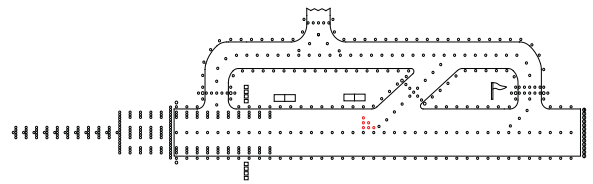
Fig 3. On 12" deep base w/ 12 7/8" adapter ring

* Please find detailed information in installation manual

Structure

1. upper cover
2. prism gasket sleeve
3. prism
4. prism gasket
5. prism pressing bracket
6. filter
7. lamp holder
8. lamp
9. mounting plate assy
10. light body gasket
11. lighting fixture gasket
12. inner cover
13. valve
14. plug





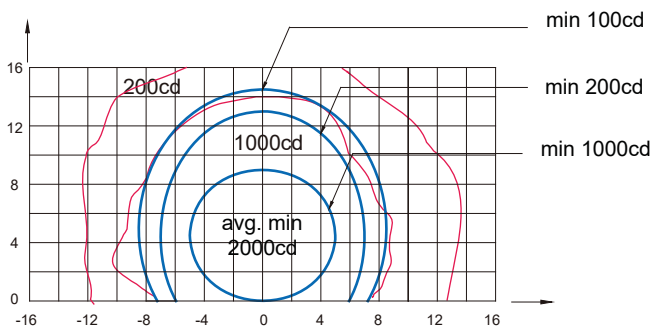
■ RAP-08

■ Rapid Exit Taxiway Indicator (8-inch)

Light Source

Lamp: One 48W/6.6A reflector halogen lamps.

Photometric Data



RAP-08 (Yellow), ICAO Figure A2-7

| Application | | Main beam | | Color | Required min avg. cd | Actual avg. cd |
|-------------|------------------|-----------|----------|--------|----------------------|----------------|
| | | H | V | | | |
| RAP-08 | ICAO Figure A2-7 | ±5° | 0° to 9° | Yellow | 2000 | 3623 |
| | ICAO Figure A2-6 | ±5° | 0° to 7° | Yellow | 2000 | 3557 |

Packing Data

| | |
|----------------------------|---|
| 1 light w/o base | Packing size: 210×210×130 mm ³ |
| Unit net weight: 3.0 kg | Gross weight: 3.1 kg |
| 1 light w/ 8" shallow base | Packing size: 240×240×180 mm ³ |
| Unit net weight: 5.8 kg | Gross weight: 6.0 kg |

Spare parts

| Struc No. | Part Name | Order No. | Description |
|-----------|------------------------|-----------|--|
| 2 | Prism Gasket Sleeve | 43107 | Prism Gasket Sleeve (H29) |
| 3 | Prism | 31141 | Prism (oversized H35.2) |
| 4 | Prism Gasket | 43307 | Prism Gasket (62×47) |
| 5 | Prism Pressing Bracket | 43208 | Prism Pressing Bracket (62×55) |
| 6 | Filter | 31316-Y | Filter-Yellow (53×36) |
| 7 | Lamp Holder | 942133 | 28° Lamp Holder (assy) |
| 8 | Lamp | L64337 | Halogen Lamp, 48W/6.6A |
| 10 | Light Fixture Gasket | 41107 | "O" ring seal 52.07×2.62 |
| 11 | Light Body Gasket | 41141 | Seal Belt (standard) |
| 13 | Valve | 941801 | Valve Inside Assy |
| 14 | Plug | 70620 | Secondary Cable Connector - Style 6 Plug |

Accessories

| Sn | Order No. | Description |
|----|-------------|------------------------------------|
| 1 | SB-08 | 8" Shallow Base Assy |
| 2 | SB-12 | 12" Shallow Base Assy |
| 3 | DB-12 | 12" Deep Base Assy |
| 4 | AR-12/08 | 12"-8" Adapter Ring Assy |
| 5 | 951101 | 8" Lamp Holder |
| 6 | ITF-065-066 | 65W Isolation Transformer |
| 7 | REC7 | Secondary Cable Receptacle Style 7 |