



- END-08
- Runway End Light (8-inch)

## Compliance with Standards

CAAC: AC-137-CA-2015-03  
 SAC: GB/T 7256  
 ICAO: Annex 14, Volume 1  
 IEC: TS 61827  
 FAA: AC 150/5345-46  
 NATO: STANAG 3316

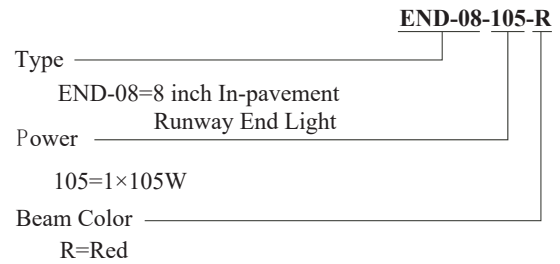
## Application/Use

Runway end light

## Features

- Proprietary prism structural design and manufacturing process to ensure excellent optical performance
- Self-alignment optical component without need of recalibration when replacing bulb as well as optical components
- Upper cover with flat out-light surface to prevent from water buildup and ensure high luminous efficiency
- Upper cover with equal-strength design and forging craft, which has premium mechanical and barrier capacity, and shock resistance ability
- Smooth and sleek upper cover to prevent from damaging aircraft tires  
Lighting fixture made of highly conductive aluminum alloy, which ensures good heat dispersion
- Bulb Fixed mount suspension design to effectively prolong bulb's lifetime
- Main structure made of corrosion-resistant aluminum alloy with special special anodic oxidation treatment, all fasteners are made of stainless steel, suitable for harsh environment application
- High-precision parts and components machining to ensure all dimensional quality and precision
- IP68-grade, that can withstand inner pressure of up to 138kpa or water pressure generated from aircrafts' impact on the optical window
- Optional dual plug that permits bilateral control of the two-way light and intelligent loop control

## Ordering Information



\* Please provide detailed installation info while ordering, spare parts and accessories should be separately ordered with specific order no.

## Installation

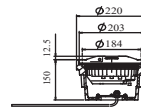


Fig 1. On 8" shallow base

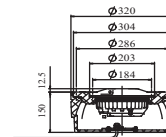


Fig 2. On 12" shallow base w/ 12"/8" adapter ring

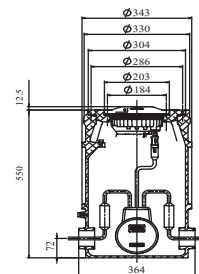
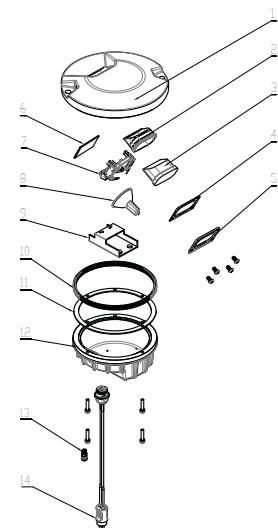


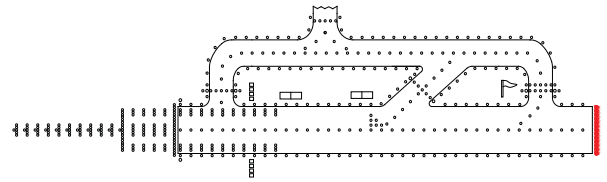
Fig 3. On 12" deep base w/ 12"/8" adapter ring

\* Please find detailed information in installation manual

## Structure

1. upper cover
2. prism gasket sleeve
3. prism
4. prism gasket
5. prism pressing bracket
6. filter
7. lamp holder
8. lamp
9. mounting plate assy
10. light body gasket
11. lighting fixture gasket
12. inner cover
13. valve
14. plug





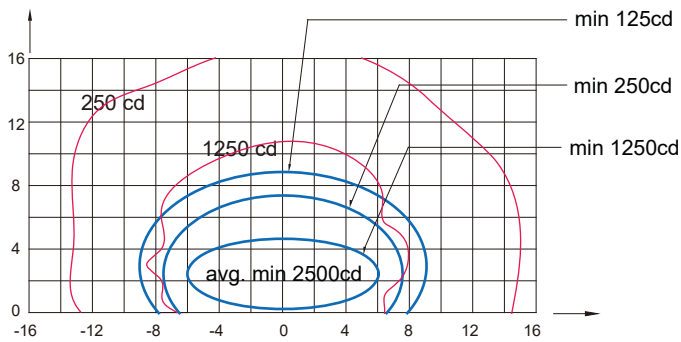
■ END-08

■ Runway End Light (8-inch)

## Light Source

Lamp: One 48W/6.6A reflector halogen lamps.

## Photometric Data



END-12 (Red), ICAO Figure A2-8, FAA L-850D

Application		Main beam		Color	Required min avg. cd	Actual avg. cd
		H	V			
END-12	ICAO Figure A2-8 /FAA L-850D	±6°	0.25° to 4.75° / 0.2° to 4.7°	Red	2500	3005

## Packing Data

1 light w/o base                      Packing size: 210×210×130 mm<sup>3</sup>  
 Unit net weight: 3.0 kg              Gross weight: 3.1 kg  
 1 light w/ 8" shallow base        Packing size: 240×240×180 mm<sup>3</sup>  
 Unit net weight: 5.8 kg              Gross weight: 6.0 kg

## Spare parts

Struc No.	Part Name	Order No.	Description
2	Prism Gasket Sleeve	43107	Prism Gasket Sleeve (H29)
3	Prism	31141	Prism (oversized H35.2)
4	Prism Gasket	43307	Prism Gasket (62×47)
5	Prism Pressing Bracket	43208	Prism Pressing Bracket (62×55)
6	Filter	31316-R	Filter-Red (53×36)
7	Lamp Holder	942133	28° Lamp Holder (assy)
8	Lamp	L64339	Halogen Lamp, 105W/6.6A
10	Light Fixture Gasket	41107	"O" ring seal 1 52.07×2.62
11	Light Body Gasket	41141	Seal Belt (standard)
13	Valve	941801	Valve Inside Assy
14	Plug	70620	Secondary Cable Connector - Style 6 Plug

## Accessories

Sn	Order No.	Description
1	SB-08	8" Shallow Base Assy
2	SB-12	12" Shallow Base Assy
3	DB-12	12" Deep Base Assy
4	AR-12/08	12"-8" Adapter Ring Assy
5	951101	8" Lamp Holder
6	ITF-065-066	65W Isolation Transformer
7	REC7	Secondary Cable Receptacle Style 7