

# Airsafe

■ SB-12

■ Shallow Base(12-inch)



## Compliance with Standards

FAA: AC 150/5345-42 & 46

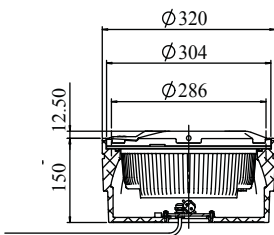
## Application/Use

Installation of 12'' inlet lights,  
or 8'' inlet lights w/ 12''-8'' adaptor rings

## Features

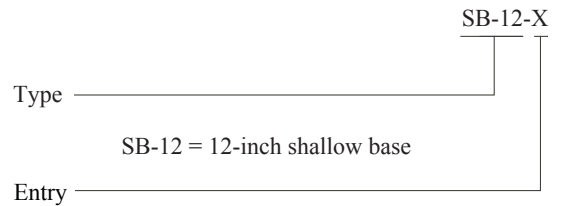
- Formed by extrusion molding of premium aluminum alloy material
- Special material prescription with good thermal conductivity
- Equal-strength structural design with even loading and less possibility of deforming
- Interior reinforcing ribs ensure strong loading capacity
- High-strength, good mechanical property, verified by FAA's sub-test on loading capacity
- Extrusion processing ensures denser interior structure and better mechanical property
- High-precision machining, fully guarantees the quality and precision of bases
- Made of anti-corrosion aluminum with prior preservative treatment, durable in use
- Screws equipped with stainless wire thread insert, which effective prolongs the service life
- Secondary connection interface of metallic waterproof connectors with premium waterproof property
- Optional standard 8''-12'' adaptor ring, applicable for the use of 8-inch in-pavement lights

## Dimensions



Packing size: 330×330×180 mm<sup>3</sup>  
Net weight: 6.62 kg

## Ordering Information

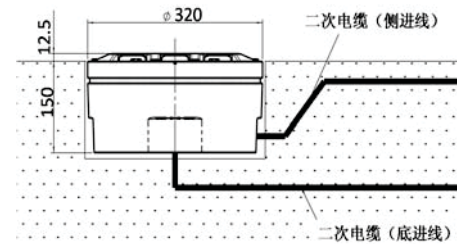


S = Side-in

B = Bottom-in

Note: customization of entry available

## Installation



\* Side-in and bottom-in types available

SB-12

1

1